



# CHIPPEWA LAKE MASTER PLAN

Chippewa Lake, Ohio /// 4.2022





# ACKNOWLEDGMENTS

SPECIAL THANKS TO THE STEERING COMMITTEE MEMBERS, INCLUDING:

MEDINA COUNTY PARK DISTRICT

VILLAGE OF CHIPPEWA LAKE & GLORIA GLENS PARK VILLAGE

LAFAYETTE & WESTFIELD TOWNSHIPS

OHIO DEPARTMENT OF NATURAL RESOURCES

MUSKINGUM WATERSHED CONSERVANCY DISTRICT

CHIPPEWA LAKE OHIO HISTORICAL SOCIETY

MEDINA COUNTY ECONOMIC DEVELOPMENT CORPORATION

MEDINA COUNTY PLANNING COMMISSION

MEDINA COUNTY CHAMBER OF COMMERCE

MEDINA COUNTY ENGINEER'S OFFICE

MEDINA COUNTY SANITARY ENGINEER'S OFFICE

MEDINA COUNTY SOIL AND WATER CONSERVATION DISTRICT

CHIPPEWA YACHT CLUB

THE OAKS LAKESIDE

CITIZENS OF MEDINA COUNTY AND NORTHEAST OHIO

# CONTENTS

SECTION 01

SECTION 02

SECTION 03

SECTION 04

SECTION 05

SECTION 06

SECTION 07

SECTION 08

SECTION 09

**WHY?**

**SITE HISTORY & CONTEXT**

**DESIGN PROCESS**

**GUIDING PRINCIPLES**

**EXISTING CONDITIONS**

OVERALL SITE

FOCUS AREA

SITE ANALYSIS

**PUBLIC ENGAGEMENT**

OVERVIEW

PUBLIC MEETING #1 RESULTS

ONLINE SURVEY #1 RESULTS

ONLINE SURVEY #2 RESULTS

PUBLIC MEETING #2 & LIVE SURVEY RESULTS

**PLAN**

MASTER PLAN

FOCUS AREA CONCEPTS

**PHASING**

**APPENDIX**

CARRYING CAPACITY STUDY





# SECTION 1

Why?



# CHIPPEWA LAKE MASTER PLAN

The key to a successful public space master plan is initial and continual engagement with users (residents, stakeholders, regulatory agencies, and owner personnel). This people-first approach, in conjunction with understanding the area, results in an interactive process where the final plan is truly developed by the people.

While public input is important to plan development, the environment they utilize becomes equally important. The Chippewa Lake ecology shows signs of concern with poor water quality, continuous flooding, and deteriorating plant life. Where human recreation is integrated into a deteriorated ecosystem, special care shall be considered to the protection and enhancement of ecological assets.

To develop a strong vision for such an area, understanding the area's past is another key element to creating a meaningful and sustainable master plan. The Chippewa Lake area has been widely used as a regional recreational gathering space for more than 100 years, and societal evolution will help inform the next transformation.



*Signs welcoming visitors to Chippewa Lake.*





## WHY?

- 1 CREATING A DESTINATION, “THE PEOPLE’S PLAN”
- 2 OPPORTUNITY TO PROTECT AND ENHANCE ECOLOGICAL ASSETS
- 3 HIGHLIGHT HISTORICAL SIGNIFICANCE
- 4 UNCOVER EXISTING PHYSICAL, EMOTIONAL, AND NATURAL HIGHLIGHTS

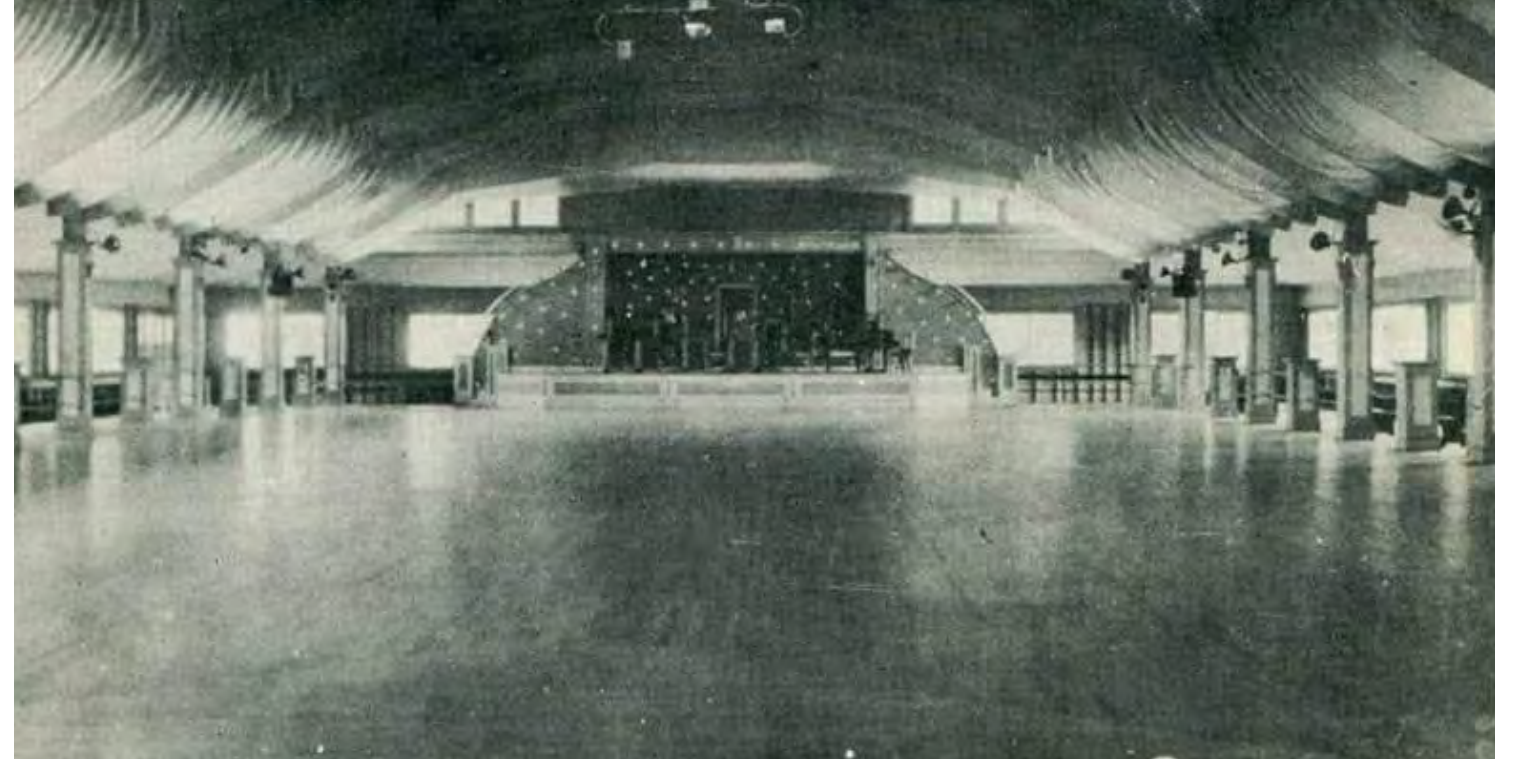


# SECTION 2

## Site History & Context



# HISTORY & CONTEXT



As Chippewa Lake is Ohio's largest inland glacial lake, the area is a natural gathering space. Native inhabitants used the lake long before the expansion of European settlers into the newly opened Western Reserve. Chippewa Lake became a destination for colonial settlers to swim, fish, and picnic. In the late 1800's, the lake became a regional destination, with picnic grounds, social gatherings, swimming beach, a steamboat, and a manual roller coaster. At this time, the lake was deemed private and coincided with the ownership of the amusement park.

Around the turn of the 19th century, Chippewa Lake evolved into a family-friendly amusement park, with music, dancing, and food stands. The Amusement Park grew over time and by the Roaring 1920's, became a destination for rides, food, music, and dancing. The regional attraction thrived for several more decades until it closed its doors in 1978, when the park struggled to compete against the growing Cedar Point and Geauga Lake amusement parks and the surrounding steel and rubber industries had closed or relocated.



**NATIVE AMERICAN HUNTING & GATHERING AREA**

**COLONIAL DEVELOPMENT**





Since 1978, the amusement park remained largely untouched, but with decades of neglect, nature slowly started to reclaim the site with trees and vegetation growing through park attractions. In the late 2000's, a majority of the amusement park attractions were demolished with only several left remaining, becoming historic relics of what was once was a thriving destination.

Medina County Park District acquired the lake in 2007, and the amusement park in 2020, with the goal for Chippewa Lake to become an iconic regional park within Medina County.

With an understanding of Chippewa Lake's history, an obvious and important condition is determined:

***A Place for Gathering***

ANDREW'S PICNIC GROUNDS

CHIPPEWA LAKE  
AMUSEMENT PARK

MEDINA COUNTY  
PARK DISTRICT



A landscape photograph showing a stone retaining wall in the foreground, a large tree with bare branches in the middle ground, and a grassy area in the background. A teal semi-transparent rectangle is overlaid on the image, containing the text 'SECTION 3' and 'Design Process'.

# SECTION 3

## Design Process



# DESIGN PROCESS

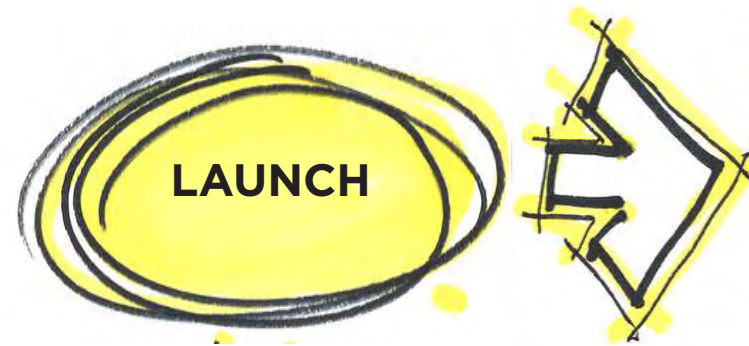
The design process guides the public to produce a 'Vision'; it is a series of steps that help create the framework for understanding the beginning, development, and finalization of the plan.



*Former amusement park relic; "tea cup" ride.*



# SIX STEPS



## LAUNCH

- Project Launch & Kick-Off Meeting



## GATHER, ASSESS, ENVISION

- Assemble Project Data
- Existing Conditions Analysis
- Initial Concepts
- Steering Committee Meeting #1



## ENGAGE, STEP 1

- Public Meeting #1
- Online Survey
- Steering Committee Meeting #2



## REFINE & DRAFT

- Concept Refinement
- Draft Report
- Online Survey
- Steering Committee Meeting #3



## ENGAGE, STEP 2

- Public Meeting #2
- Live Survey



## FINALIZE & IGNITE

- Final Report
- Carrying Capacity Analysis



The background image shows a school building with a sign that says "COURT" in large letters. A person is walking on a walkway in the foreground. The text "SECTION 4 Guiding Principles" is overlaid on the image in a dark blue box.

# SECTION 4

## Guiding Principles

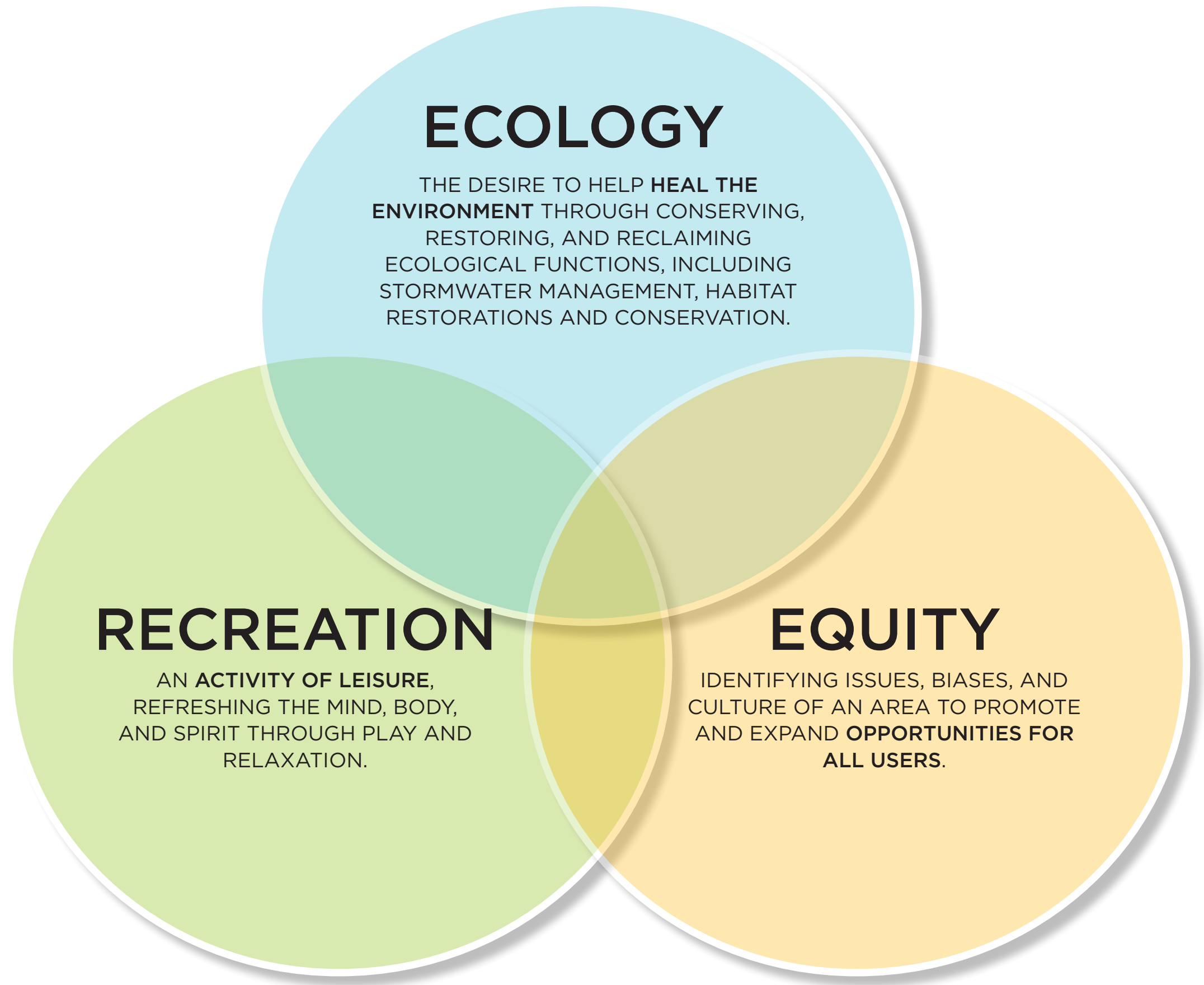


# GUIDING PRINCIPLES

Through data gathering, initial client meetings, and conversations with stakeholder groups, several items kept arising:

- Flooding is a significant issue.
- Lake health is a concern.
- Overcrowding is a concern for residents as the area becomes a public park.

Based on this information, the planning team listened and developed three guiding principles, with definitions to influence the design process.



**NOTE:**

The guiding principles for the project were developed through existing conditions gathering / assessments, and stakeholder group discussions.





*The Plan reflects a balance of recreation and ecology, creating public access points to the lake while protecting its wildlife.*