

August 6, 2022
Medina Gazette Edition

medinacountyparks.com
(330) 722-9364

Leaflet


Your Connection to Nature  Medina County Park District

Board of Commissioners
Kathleen E. Davis
Andrew J. de Luna
Dennis B. Neate

Nathan D. Eppink, Director
Jill M. Teubl, Editor

 Facebook
@MedinaCountyParkDistrict

 Twitter
@medinacoparks

 Instagram
@medinacountyparks

New Development Coordinator Joins Park District Staff

By: Natalie Peacock, Development Coordinator



Natalie Peacock
Development Coordinator

My name is Natalie Peacock, and I'm the new and first-ever development coordinator at the Medina County Park District. My connections to this area mean a great deal to me. I am a graduate of the Medina School District and The University of Akron. Before coming to the parks, I worked on the Fund Development team for almost seven years at the Akron-Canton Regional Foodbank. As a lifelong resident of Medina, I'm very excited to be a part of the parks during this unprecedented time of growth.

Whether it is the former Chippewa Lake amusement park or the future Loveland Farm on Route 18, there are so many exciting things on the horizon.

My role here at the parks will consist of several different facets. For starters, I will be working closely with our non-profit 501(c)3 organization, Friends of the Medina County Parks, to help grow the membership of all age groups, assist with fundraising efforts, and create opportunities for stewardship and connection. I will also work on building relationships in the community with individual donors and corporate and community partners and growing such programs as sponsorships and planned giving. These are just a few of the many ways that residents of Medina County and visitors will be able to help support future park initiatives.



One of the most important ingredients of development is harnessing the passion and enthusiasm we see every day in the people who build time into their busy schedules to enjoy everything we offer in the parks. As individuals and families, our community members enjoy fishing, boating, hiking, cycling, photography, and picnicking. The ever-expanding list of programming in each of our parks includes nature walks, lectures, educational opportunities for students, and workshops for learning new skills.

Medina County has always been very generous and supportive. Over the years, local residents have seen the wisdom in preserving our county's woodlands and farms. As a result, we have some of the most diverse collection of landforms already populated with a vast array of wildlife and native plant life. The parks have become a significant stopover for migratory birds as well as a natural resource for the delicate balance of insects, fish, and other food sources that populate our wetland ecosystems.

I am hoping to harness people's excitement for all the new and existing projects to help fund what we are ultimately working to achieve in Medina County: enhancing the quality of all life through education, conservation, and the protection of natural resources. This is the legacy that we want to pass on to the next generation of supporters and donors who will always feel the need to preserve and connect to the natural world right here in their own county.

If you have questions or would like to discuss donations or sponsorships, I can be contacted at npeacock@medinaco.org or 330-722-9364.



Medina County Park District's self-guided hiking program, Trekking Through Autumn, is the perfect opportunity for families and individuals of all abilities to get out and experience the crisp days and spectacular colors of fall.

Back for its 16th year, Medina County Park District's popular annual hiking program offers participants the opportunity to enjoy the splendor of the season and earn awards by completing at least eight designated hikes between September 1 and November 30.

Hikers complete the walks at their own pace and on their own schedules. Medina County park sites are open every day from 6 a.m. until one hour past sunset -- except Oenslager Nature Center, which is open 9 a.m. to 5 p.m. Tuesdays through Saturdays and noon to 5 p.m. on Sundays. The nature center is located in the Alderfer-Chatfield Wildlife Sanctuary, so please keep in mind that pets are not permitted at this site. Dogs on leashes are welcome at all other park locations.

FORMS WILL BE AVAILABLE STARTING AUGUST 15

To participate, pick up a Trekking Through Autumn form at Medina County Park District Headquarters, Oenslager Nature Center, or simply print one at www.MedinaCountyParks.com. Check trails off the list as you complete them. When you've hiked eight or more, bring your completed form to Oenslager Nature Center by December 17 to claim your reward. Backpacks are awarded to first-year participants. Hiking pins are awarded in successive years. Awards are free for Medina County residents. Out-of-county residents pay \$10 for backpacks and \$3 for hiking pins. Pins are not available to first-year hikers.

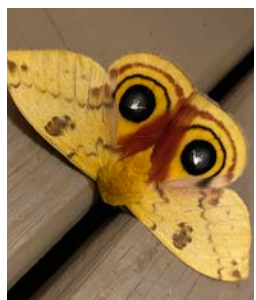


Several Employment Opportunities Available

Employment with the park district is more than a job -- it's an opportunity to make lives better in a fun, fulfilling team environment. Open positions include police officer, park planner, and park laborer. To learn more about these positions, go to www.medinacountyparks.com, click on *About Us*, then on *Employment Opportunities*.



Purchase t-shirts, tank tops, and more at www.shopmedinacountyparks.com.



Self-guided Moth Meander

Saturday, August 13 through Sunday, August 28 at Oenslager Nature Center

Meander through field and forest on this self-guided program to learn about and, hopefully, see a few moths. This time of year is a great time to look for moths after dark, but don't let the daylight discourage you as there are still moths to be seen! Follow interpretive signs along the Paved, Wetland Loop, and Pine Forest Loop Trails (teal rectangle, red pentagon, and pink oval) anytime between open and close to aid you in your discoveries. **The wildlife sanctuary is open Tuesday through Saturday from 9 a.m. - 5 p.m., Sunday from 12 - 5 p.m., and is closed on Mondays.** All ages are welcome. No registration is required. Free.



E-newsletter

If you would like to receive a monthly e-newsletter from the park district, send an email to parks@medinacountyparks.com asking to be placed on the list.